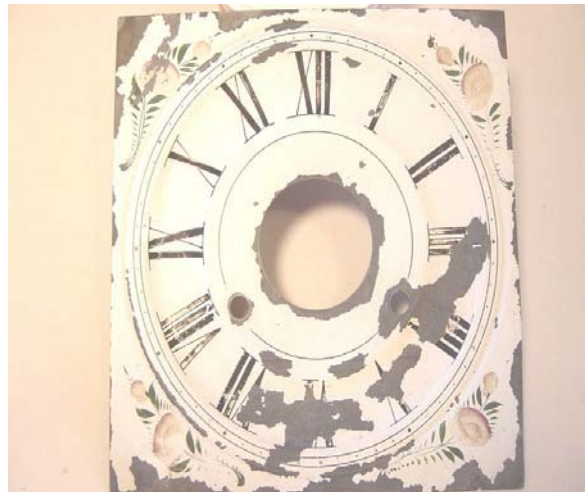
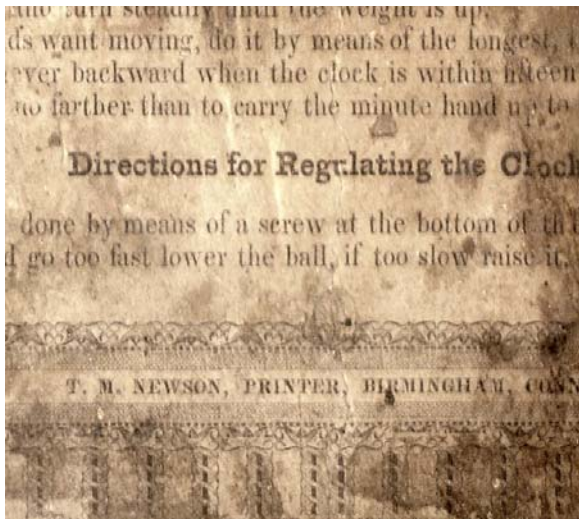
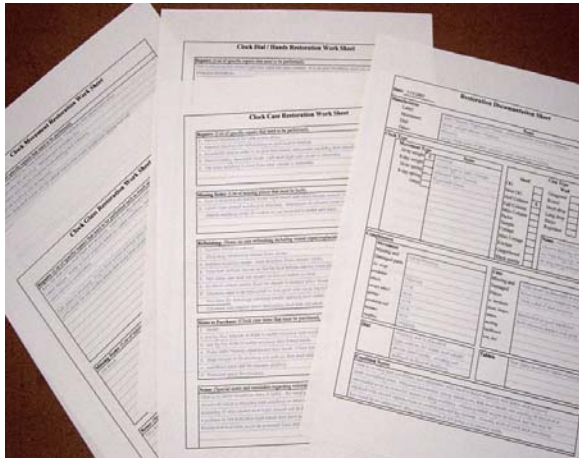


Chapter 14: Final Documentation

Full color images for this chapter in *Extreme Restoration* are provided on the following pages. The size of images has been increased as much as possible to improve

Clock Identification:



Clock Dial / Hands Restoration Work Sheet

Repairs: (List of specific repairs that need to be performed.)
 Dial is missing but correct type and size has been located. It is in poor condition and will require extensive restoration.

Clock Case Restoration Work Sheet

Repairs: (List of specific repairs that need to be performed.)

1. Remove backboard for label preservation.
2. Remove columns for refinishing in gold and/or tortoise
3. Disassemble case in order to re-glue base board, reasonable squareity and security
4. Remove badly damaged veneer. Left and right side veneer is restorable.
5. Top brass molding is loose from case. Veneer is restorable.

Missing Items: (List of missing pieces that must be built)



Photo Documentation:



Documentation Package:

